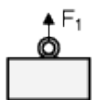
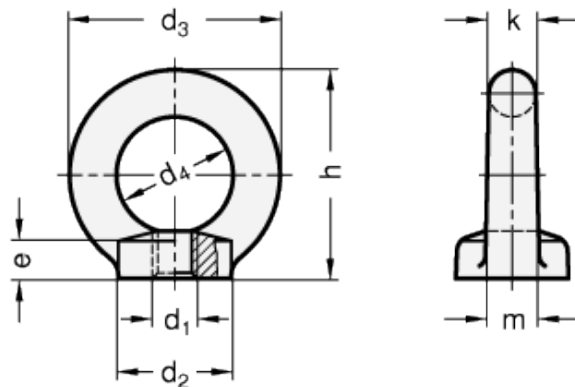
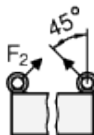


DIN 582

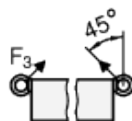
Lifting female eye bolts



Axial load-bearing capacity per eye nut



Load-bearing capacity at max. 45° per eye nut



Lateral load-bearing capacity at max. 45° per eye nut



Do not use under shear tension



technical informations

Material

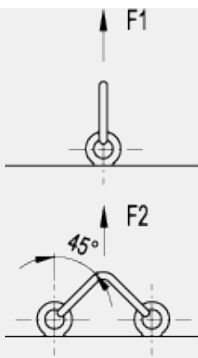
Forged steel annealed body, zinc-plated blue passivated, machined contact face.

Features and applications

The following guidelines of the lifting eye nuts DIN 582 have to be observed in addition to the load values given in the above table.

The eye nut must be of fully screwed in to achieve a perfect contact between the two mating faces.

Both threads must be of a equal length and the base material of equal strength to that of the nut. For more guidelines, see the enclosed operating instruction.



Standard Elements	Main dimensions							Mounting hole	$F_{1 \text{ max. in N}}$	$F_{2 \text{ max. in N}}$	$F_{3 \text{ max. in N}}$	Weigh
	Description	d_2	d_3	d_4	e	h	k					
DIN 582-M8-ST	20	36	20	8.5	36	8	10	M8	1400	1000	700	45
DIN 582-M10-ST	25	45	25	10	45	10	12	M10	2300	1700	1150	100
DIN 582-M12-ST	30	54	30	11	53	12	14	M12	3400	2400	1700	155
DIN 582-M16-ST	35	63	35	13	62	14	16	M16	7000	5000	3500	240
DIN 582-M20-ST	40	72	40	16	71	16	19	M20	12000	8600	6000	360
DIN 582-M24-ST	50	90	50	20	90	20	24	M24	18000	12900	9000	720
DIN 582-M30-ST	65	108	60	25	109	24	28	M30	32000	23000	16000	1320
DIN 582-M36-ST	75	126	70	30	128	28	32	M36	46000	33000	23000	2080



STANDARD MACHINE ELEMENTS WORLDWIDE